

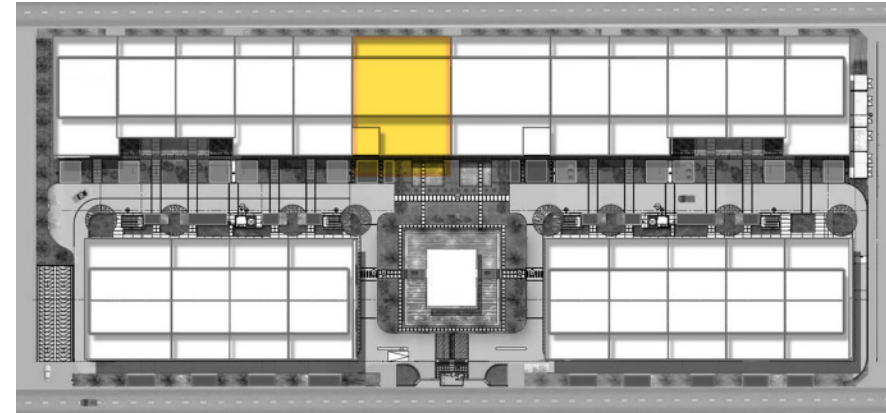
LAYOUT PAVILIONS "A" OFFICE

Office Features:

- Shell and core unit
- No. of Spaces: 2 units
- Space Available BUA: 1,495 sqm.
- Three VIP Car Park
- 30 basement parking (1/50 sqm rent)
- Good ceiling height

Rental Rate:

- Garden View



PROPOSED FURNITURE LAYOUT

Ground Floor 507 sqm



First Floor 651 sqm



Second Floor 336.5 sqm



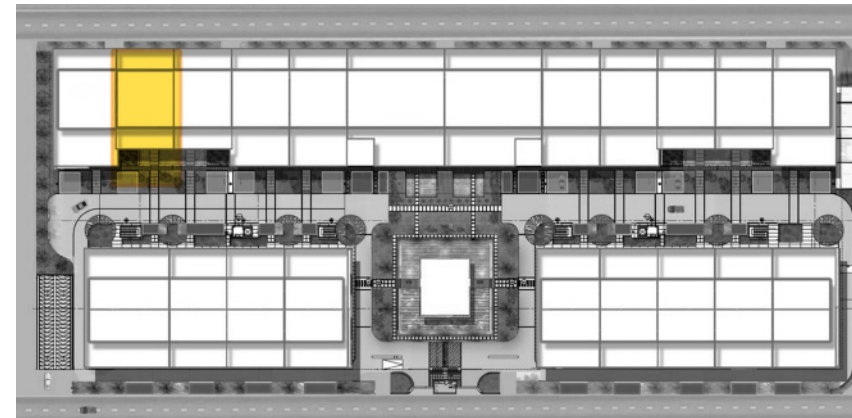
LAYOUT PAVILIONS “B” OFFICE

Office Features:

- Shell and core unit
- No. of Spaces: 10 units
- Space Available BUA: 789 - 947 sqm.
- Two VIP Car Park
- 18 basement parking (1/50 sqm rent)
- Good ceiling height

Rental Rate:

- Garden View
- Grace period 3 months
- Rental duration 3 years

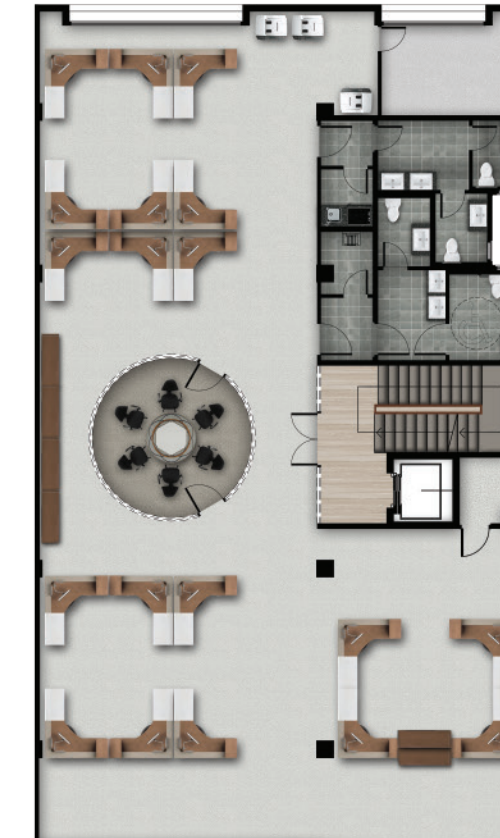


PROPOSED FURNITURE LAYOUT

Ground Floor 240 sqm



First Floor 350 sqm



Second Floor 199 sqm



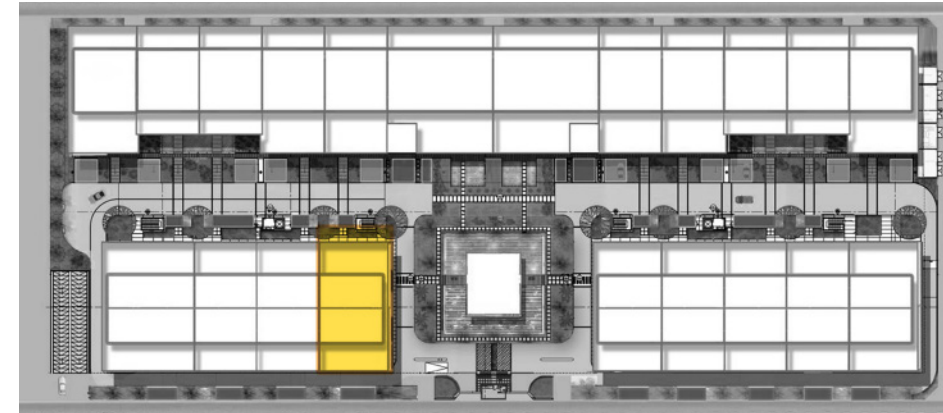
LAYOUT PAVILIONS "C" OFFICE

Office Features:

- Shell and core unit
- No. of Spaces: 18 units
- Space Available BUA: 473 – 726sqm.
- One VIP Car Park
- 10 basement parking (1/50 sqm rent)
- Good ceiling height

Rental Rate:

- Front View
- Garden View
- Adjacent to central hub
- Grace period 3 months
- Rental duration 3 years



PROPOSED FURNITURE LAYOUT

Ground Floor 190 sqm



First Floor 238 sqm



Second Floor 104 sqm

